

STRA

Wide-Opening Self-Centering Steady Rest
自定心中心架 大开口



产品特点

对各种轴进行加工时，工件会摇晃且夹紧状态不稳定。
为避免由此产生的问题，支撑工件

主要技术

特殊凸轮结构，高定心精度和高重复精度
安装接近开关，可确认夹紧状态
为顺利装夹工件，凸轮臂一侧大大张开

Application / Customer's Benefit

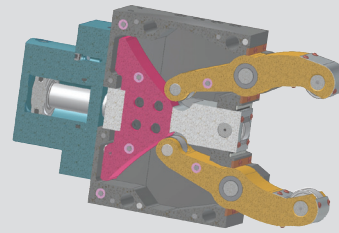
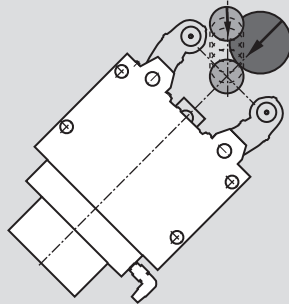
Enhances the accuracy when machining unstable, heavy or long work piece

Technical features

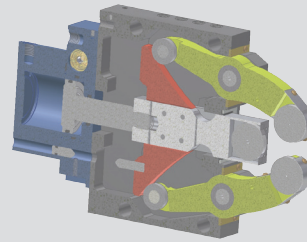
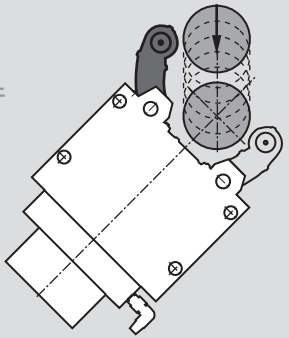
The arms and center rollers are interconnected and designed to self-adjust to various size workpieces
The mechanical design improves durability by eliminating the need for springs
The top arm pivots extra wide to allow for easier drop down loading when working on mills or flatbed lathes

固定/移动方式 / Fixed or Travelling Applications

STA
传统形式



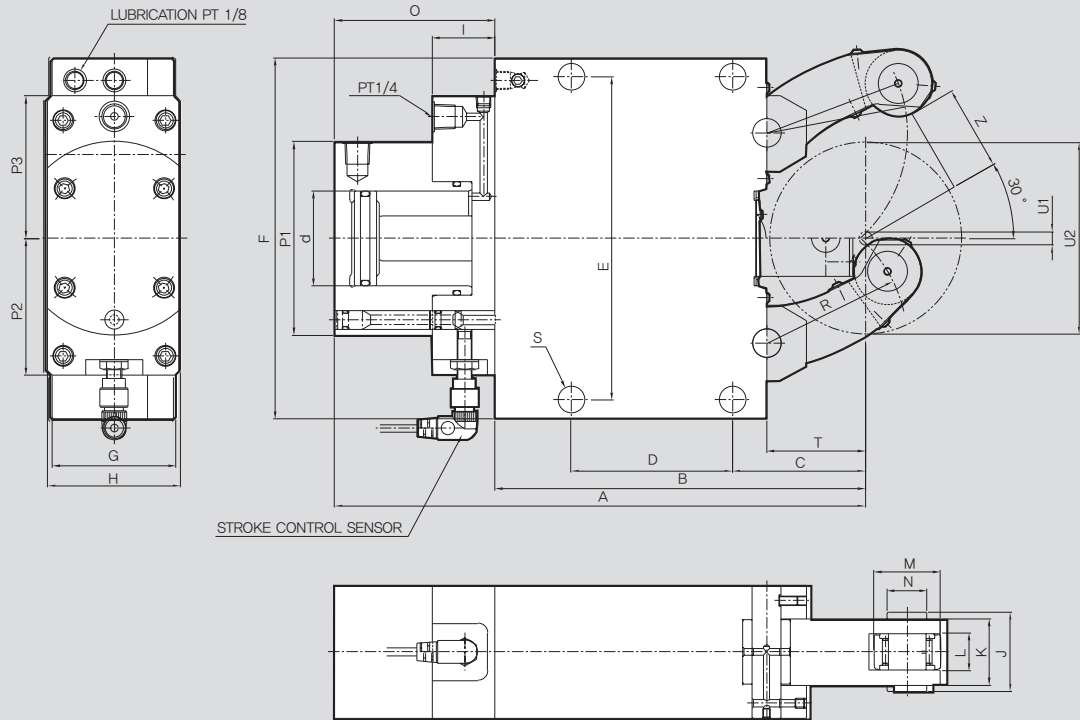
STRA
大开口凸轮臂使垂直放置工件
和自动化更加方便



产品规格 / SPECIFICATIONS

		STRA-1	STRA-2	STRA-3	STRA-3.1	STRA-4	STRA-5	STRA-6
活塞面积 [cm ²]	Piston Area [cm ²]	7	19.6	50	50	78	78	132
最大滚轮夹紧力 [kgf]	Max. Clamping Force / Roller [kgf]	100	450	1000	1000	1500	2000	3000
适用压力 [bar]	Max.	50	70	60	60	60	80	70
	Min.	6	8	8	8	8	8	8
定心范围 [mm]	Max.	52	80	130	150	220	268	460
	Min.	4	8	12	22	30	50	160
最大滚轮转速 [m/min]	Max. Roller Surface Speed [m/min]	800	800	725	725	715	700	700
定心精度 [mm]	Centering Accuracy [mm]	0.02	0.02	0.04	0.04	0.05	0.06	0.06
重复精度 [mm]	Repeatability Accuracy [mm]	0.005	0.005	0.007	0.007	0.007	0.01	0.01
重量 [kg]		6	14	39	40	92	152	420

STRA



产品尺寸 / DIMENSIONS

	STRA-1	STRA-2	STRA-3	STRA-3.1	STRA-4	STRA-5	STRA-6
A	207	279.5	431	440	608	688.5	944.5
B	137	195	312	320	448	510	709
C	51	70	115	123	146	178	215
D	64	85	135	135	240	270	330
E	118	170	262	262	365	400	640
F	132	190	290	290	400	440	680
G	55	70	85	85	110	145	145
H	70	70	100	100	144	144	158
I	33	33	37	37	37	37	37
J	24	42	52	52	67	83	83
K	20	35	45	45	60	75	75
L	12	19	25	25	25	29	29
M	19	35	47	47	52	62	80
N	6	21	25	25	32	36	42
O	70	84.5	120	120	160	187.5	235.5
P1	84	102	137	137	165	165	190
P2	66	72	90	90	102	102	115
P3	66	75	100	100	110	110	130
R	50.5	74	119	124	172	209	290
S	11	14	18	18	23	23	27
T	37	52	85	93	128	160	175
Z	26.5	41	66	76	111	135	230
U1	4	8	12	22	30	50	160
U2	52	80	130	150	220	268	460