

STA Self-Centering Steady Rest 自定心中心架 宽开口



产品特点

对各种轴进行加工时，工件会摇晃且夹紧状态不稳定。为避免由此产生的问题，支撑工件

主要技术

特殊凸轮结构，高定心精度和高重复精度
安装接近开关，可确认夹紧状态

Application / Customer's Benefit

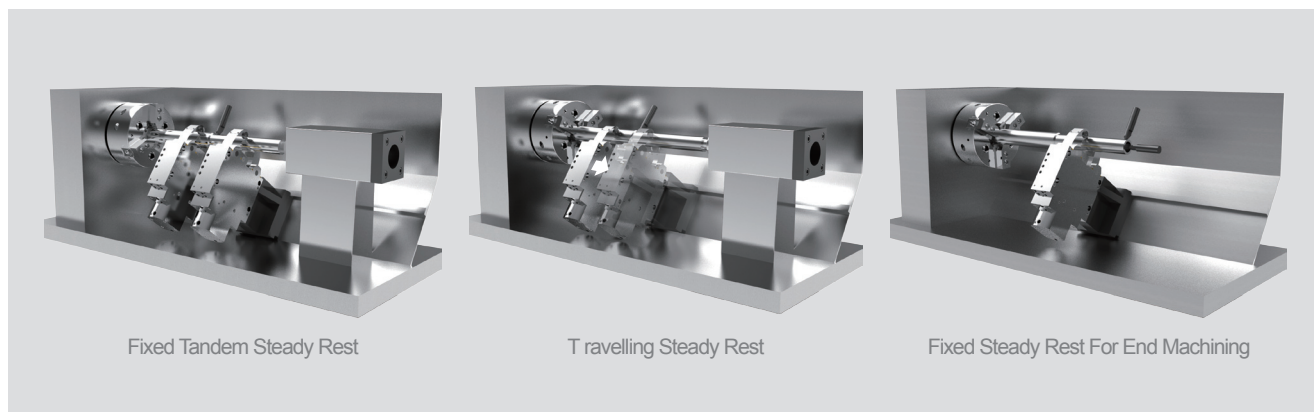
Enhances the accuracy when machining unstable, heavy or long work piece

Technical features

The arms and center rollers are interconnected and designed to self-adjust to various size workpieces.

The mechanical design improves durability by eliminating the need for springs.

固定/移动方式 / Fixed or Travelling Applications



Fixed Tandem Steady Rest

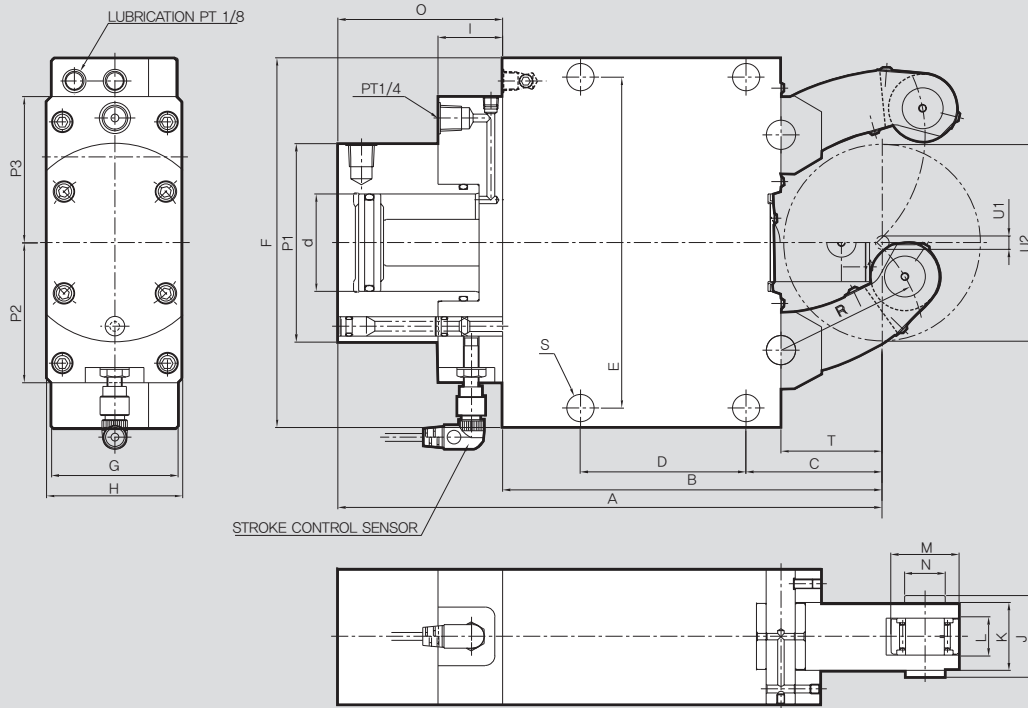
Travelling Steady Rest

Fixed Steady Rest For End Machining

产品规格 / SPECIFICATIONS

		STA-1	STA-2	STA-3	STA-3.1	STA-3.2	STA-4	STA-5	STA-5.1	STA-6
活塞面积 [cm ²]	Piston Area [cm ²]	7	19.6	50	50	50	78	78	78	132
最大滚轮夹紧力 [kgf]	Max. Clamping Force / Roller [kgf]	100	450	1000	1000	1000	1500	2000	2000	3000
适用压力 [bar]	Max. Operation Pressure [bar]	50	70	60	60	60	60	80	80	70
	Min. Pressure [bar]	6	8	8	8	8	8	8	8	8
定心范围 [mm]	Max. Centering Range [mm]	64	101	152	165	200	245	310	350	460
	Min. Centering Range [mm]	4	8	12	20	50	30	45	85	125
最大滚轮转速 [m/min]	Max. Roller Surface Speed [m/min]	800	800	725	725	725	715	700	700	700
定心精度 [mm]	Centering Accuracy [mm]	0.02	0.02	0.04	0.04	0.04	0.05	0.06	0.06	0.06
重复精度 [mm]	Repeatability Accuracy [mm]	0.005	0.005	0.007	0.007	0.007	0.007	0.01	0.01	0.01
重量 [kg]	Weight [kg]	6	14	39	40	43	92	152	155	420

STA



产品尺寸 / DIMENSIONS

	STA-1	STA-2	STA-3	STA-3.1	STA-3.2	STA-4	STA-5	STA-5.1	STA-6
A	207	279.5	431	440	455	608	697.5	717.5	944.5
B	137	195	312	320	335	448	510	530	709
C	51	70	115	123	138	146	178	198	215
D	64	85	135	135	135	240	270	270	330
E	118	170	262	262	262	365	400	400	640
F	132	190	290	290	290	400	440	440	680
G	55	70	85	85	85	110	145	145	145
H	70	70	100	100	100	144	144	144	158
I	33	33	37	37	37	37	37	37	37
J	24	42	52	52	52	67	83	83	83
K	20	35	45	45	45	60	75	75	75
L	12	19	25	25	25	25	29	29	29
M	19	35	47	47	47	52	62	62	80
N	6	21	25	25	25	32	36	36	42
O	70	84.5	120	120	120	160	187.5	187.5	235.5
P1	84	102	137	137	137	165	165	165	190
P2	66	72	90	90	90	102	102	102	115
P3	66	75	100	100	100	110	110	110	130
R	50.5	74	119	124	139	172	209	229	290
S	11	14	18	18	18	23	23	23	27
T	37	52	85	93	103	128	160	180	175
U1	4	8	11	20	50	35	45	85	125
U2	64	101	152	165	220	245	310	350	460