

# YAST

고속중실형 회전유압실린더 (체크밸브 내장+근접스위치 부착 가능형)

CLOSED CENTER HYDRAULIC CYLINDER (CHECK VALVE+PROXIMITY SWITCH Type)

高速中実型回転油圧シリンダー / 中実回転油缸



-- 복합적인 구조 · 소형 경량화 · 고성능 · 고품질

-- Combined Structures · Small size & Light Weight  
· High Performance and High Quality

-- 複合的な構造 · 小型軽量化 · 高性能 高品質

-- 复合结构 · 体积小, 重量轻 · 性能优, 质量好

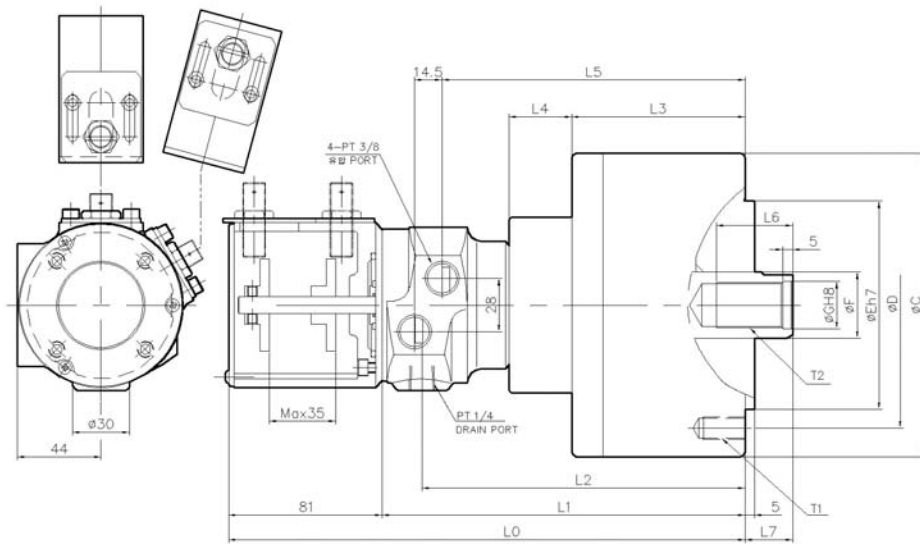
※ 허용 최고 회전속도는 실측치에 준함.

※ Maximum turning speed is based on actual measurement

## Specifications / 规格 / 仕様表 / 사양표

Spec. 사양 Model 형식	Order NO. 오더번호	Cylinder Dia 실린더내경 mm	Piston stroke 피스톤스트로크 mm	Piston surface area 피스톤 단면적 cm <sup>2</sup>		Max. Draw bar pull 실린더 추력 KN(kgf)	
				Push 압축	Pull 인축	Push 압축	Pull 인축
YAST-100	2AST10	105	20	86.5	79.5	31.8(3244)	29.3(2989)
YAST-125	2AST12	130	25	132.5	123.0	48.8(4978)	45.3(4621)
YAST-150	2AST15	150	30	176.0	160.0	64.8(6610)	60.0(6120)
YASTL-150	2ASTL15S	150	50	176	160	64.8(6610)	60.0(6120)
YAST-200	2AST20	205	35	330.0	306.0	121.6(12404)	112.8(11505)
YAST-200S	2AST20S	200	35	330	306	121.6(12404)	112.8(11505)
YASTL-200	2ASTL20	200	50	330	306	121.6(12404)	112.8(11505)
YASTL-200S	2ASTL20S	200	50	330	306	121.6(12404)	112.8(11505)
YAST-245	2AST24	245	60	470.8	438.2	173.2(17671.9)	161.2(16450.2)
YAST-250	2AST25	250	60	490.2	457.7	179(18400)	169(17200)
YAST-250S	2AST25S	250	60	481.5	450	180(18270)	167.3(17078)

Spec. 사양 Model 형식	Max. operating pressure 최고사용유압력 kgf/cm <sup>2</sup>	Max. permissible speed 최고사용회전수 r.p.m.(min <sup>-1</sup> )	Total leakage 총드레인량 ℓ/min	Weight 중량 kg	GD <sup>2</sup> Moment of inertia N·m <sup>2</sup> (kgf·m <sup>2</sup> )	Matching chuck 적용척
YAST-100	40.8	6000	1.0	7.5	0.49(0.05)	CAS-06
YAST-125	40.8	6000	1.0	10.3	0.88(0.09)	CAS-08, CAS-10
YAST-150	40.8	5500	1.0	13.8	1.47(0.15)	CAS-10, CAS-12
YASTL-150	40.8	5500	1.0	15.5	-	CAS-15 이상
YAST-200	40.8	5500	1.0	22.2	3.62(0.37)	CAS-15 이상
YAST-200S	40.8	5500	1.0	24	0.42(0.05)	CAS-15 이상
YASTL-200	40.8	5500	1.0	24	0.42(0.05)	CAS-15 이상
YASTL-200S	40.8	5500	1.0	26	-	CAS-15 이상
YAST-245	40.8	2000	1.0	38	-	CAS-40, 50, 63
YAST-250	40.8	2000	1.0	38	-	CAS-40, 50, 63
YAST-250S	40.8	2000	1.0	38	-	CAS-40, 50, 63



Dimension / 尺寸 / 寸法表 / 치수표

Model 형식	Item 항목	C	D	E	F	G	L0	L1	L2
YAST-100		135	100	80	30	21	266.6	185.5	164.5
YAST-125		160	130	110	35	25	276.5	195.5	174.5
YAST-150		185	130	110	45	30.5	283.5	202.5	181.5
YASTL-150		185	130	110	45	30.5	316.5	233	205
YAST-200		245	145	120	55	37	307	226	205
YAST-200S		245	222	120	55	37	289.5	206	187.5
YASTL-200		245	145	120	55	37	336.5	238.5	220
YASTL-200S		245	222	120	55	37	286.5	196	172
YAST-245		305	220	160	65	50	397	302	256
YAST-250		314	282	160	65	46	397	302	256
YAST-250S		305	275	160	65	50	328.5	207	178

Model 형식	Item 항목	L3	L4	L5	L6	L7 max	L7 min	T1	T2
YAST-100		81.5	37	154	35	45	25	6-M10X19	M20XP2.5
YAST-125		91.5	37	164	40	50	25	6-M12X22	M24XP3.0
YAST-150		98.5	37	171	45	55	25	6-M12X20	M30XP3.5
YASTL-150		131	37	198.5	45	80	30	6-M12X20	M30XP3.5
YAST-200		122	37	194.5	60	69	34	6-M16X29	M36XP4.0
YAST-200S		104.5	37	177	60	69	34	12-M16	M36XP4.0
YASTL-200		137	37	209.5	60	80	30	6-M16	M36XP4.0
YASTL-200S		133.5	-	163.5	60	80	30	6-M16	M36XP4.0
YAST-245		166	45	249	67	85	25	6-M20X30	M42XP3.0
YAST-250		166	46	249	67	85	25	6-φ 18THRU	M42XP3.0
YAST-250S		145	-	174.5	60	85	25	12-M20	M42XP3.0

※ 치수 및 사양은 예고없이 변경될 수 있습니다  
 ※ Specifications are subject to change without notice.