

# CGH

대관통경 중공형 파워척

GREAT BORE POWER CHUCK

大貫通径中空型パワーチャック / 超大通孔动力卡盘



- 관통경 확대 · 경량화 실현 · 고성능 · 고정도 · 스피indle 직장형
- Enlargement of Through Hole · Light Weight
- High Performance and High Accuracy · Spindle Direct-Mounting Type
- 貫通径 확대 · 軽量化実現 · 高性能 高精度 · スピンドル直装型
- 超大通孔 · 重量轻 · 性能好, 精度高 · 直接安装型

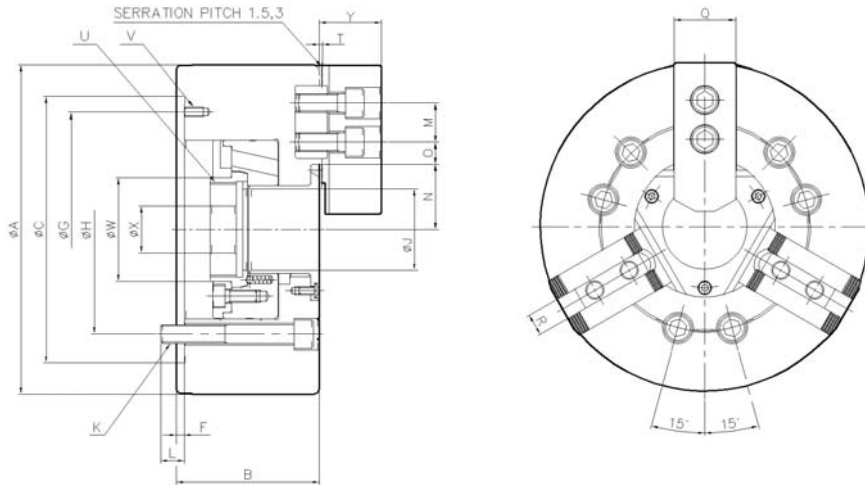
※ 척의 오랜 수명을 유지하기 위해 최소 일2회 이상 그리스를 주입하여 주십시오.  
 ※ It is recommended to grease chucks at least twice a day in order to maximize longevity.

## Specifications / 规格/仕様表/사양표

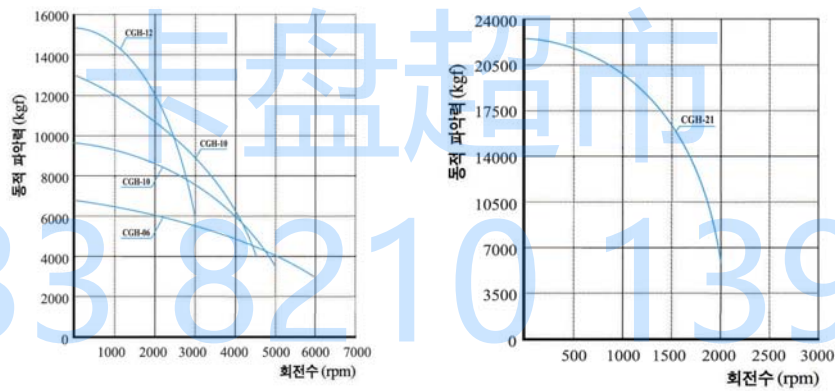
| Spec.사양<br>Mode형식 | Order NO.<br>오더번호 | Spindle nose NO.<br>주축규격 | Thru-hole (Diameter)<br>관통경 (직경)<br>mm | Jaw stroke (Diameter)<br>조 스트로크(직경)<br>mm | Plunger stroke<br>플런저 스트로크<br>mm | Gripping Dia.(External gripping)<br>파악경 (외경파악)mm |        | Max. perm issible input force<br>허용 실린더력<br>KN(kgf) |
|-------------------|-------------------|--------------------------|--|---|----------------------------------|--|--------|---|
|                   |                   |                          |  |   |                                  | Max 최대   | Min 최소 |   |
| CGH-06            | 1GH06             | A2-5                     | 52                                     | 5.5                                       | 13                               | 169  | 13     | 25(2550)  |
| CGH-08            | 1GH08             | A2-6                     | 66                                     | 7.6                                       | 18                               | 210  | 11     | 38(3900)  |
| CGH-08B           | 1GH08B            | A2-6                     | 72                                     | 7.6                                       | 18                               | 210  | 11     | 38(3900)  |
| CGH-10            | 1GH10             | A2-8                     | 82                                     | 8.5                                       | 20                               | 254  | 31     | 50(5100)  |
| CGH-12            | 1GH12             | A2-11                    | 103                                    | 10.2                                      | 24                               | 315  | 45     | 55(5610)  |
| CGH-21            | 1GH21             | A2-15                    | 166.5                                  | 10.6                                      | 23                               | 530  | 82     | 90(9177)  |

| Spec.사양<br>Mode형식 | Max. static gripping force<br>최대 정적파악력<br>KN(kgf) | Max. perm issible speed<br>최고 사용회전수<br>r.p.m(min <sup>-1</sup> ) | Weight<br>(With standard soft jaws)<br>중량 (표준소프트조 포함)<br>kg | GD <sup>2</sup><br>Moment of inertia<br>N·m <sup>2</sup> (kgf·m <sup>2</sup> ) | Matching cylinder<br>적용실린더 | Matching hard jaw<br>적용하드조 | Matching soft jaw<br>적용소프트조 |
|-------------------|---|--|---|--|----------------------------|----------------------------|-----------------------------|
| CGH-06            | 60(6120)  | 6000   | 11.9  | 2.26(0.23)   | YSGH-06                    | HJ-06T1                    | SJ-06T1                     |
| CGH-08            | 94(9597)  | 5000   | 23  | 5.59(0.57)   | YSGH-08                    | HJ-08T1                    | SJ-08T1                     |
| CGH-08B           | 94(9597)  | 5000   | 23  | 5.59(0.57)   | YSGH-08                    | HJ-08T1                    | SJ-08T1                     |
| CGH-10            | 120(12240)  | 4500   | 32  | 12.83(1.31)  | YSGH-10                    | HJ-10T1                    | SJ-10T1                     |
| CGH-12            | 145(15000)  | 3000   | 48  | 2.95   | YSGH-12                    | HJ-12T1                    | SJ-12T1                     |
| CGH-21            | 220(22460)  | 1700   | 228   | 35.8   | YSHL-21                    | HJ-21B1                    | SJ-21A1                     |

Outward Drawing/外型图/外刑图/외형도



Dynamic Gripping Force/动夹紧力/動的把握力グラフ/동적파악력 선도



Dimension/尺寸/寸法表/치수표

| Item항목   | A   | B   | C   | F | H     | J     | K     | L  | M  | Nmax  | Nmin  | O max | O min |
|----------|-----|-----|-----|---|-------|-------|-------|----|----|-------|-------|-------|-------|
| Mb del형식 |     |     |     |   |       |       |       |    |    |       |       |       |       |
| CGH-06   | 175 | 81  | 140 | 5 | 104.8 | 52    | 6-M10 | 16 | 20 | 36.9  | 34.1  | 21    | 8     |
| CGH-08   | 210 | 91  | 170 | 5 | 133.4 | 66    | 6-M12 | 17 | 25 | 46.2  | 42.4  | 23.25 | 10.25 |
| CGH-08B  | 210 | 91  | 190 | 5 | 171.4 | 72    | 6-M12 | 17 | 25 | 48.57 | 44.75 | 21    | 11    |
| CGH-10   | 254 | 100 | 220 | 5 | 171.4 | 82    | 6-M16 | 17 | 30 | 56.27 | 52.2  | 31    | 12    |
| CGH-12   | 315 | 110 | 300 | 6 | 235   | 103   | 6-M20 | 30 | 30 | 68.64 | 63.54 | 45.75 | 13.75 |
| CGH-21   | 530 | 140 | 380 | 6 | 330.2 | 166.5 | 6-M22 | 33 | 60 | 111.9 | 106.6 | 73.1  | 13.6  |

| Item항목   | P max | Pmin  | Q  | R  | S  | T   | U max    | V     | W     | X  | Y    | Z   |
|----------|-------|-------|----|----|----|-----|----------|-------|-------|----|------|-----|
| Mb del형식 |       |       |    |    |    |     |          |       |       |    |      |     |
| CGH-06   | 12    | -1    | 31 | 12 | 19 | 2   | M60×2.0  | 3-M6  | 66    | 20 | 33.5 | 72  |
| CGH-08   | 7     | -11   | 39 | 14 | 27 | 2   | M75×2.0  | 3-M6  | 80    | 30 | 39   | 95  |
| CGH-08B  | 10    | -8    | 35 | 14 | 27 | 2   | M75×2.0  | 3-M6  | 88    | 30 | 39.5 | 95  |
| CGH-10   | 9.5   | -10.5 | 44 | 16 | 27 | 2   | M90×2.0  | 3-M8  | 98    | 30 | 45   | 110 |
| CGH-12   | 8     | -16   | 49 | 21 | 28 | 2.5 | M112×2.0 | 3-M10 | 124   | 66 | 51.3 | 111 |
| CGH-21   | 11    | -12   | 65 | 25 | 39 | 5   | M180×3.0 | 3-M12 | 196.5 | 80 | 73   | 180 |

※ 치수 및 사양은 예고없이 변경될 수 있습니다.  
 ※ Specifications are subject to change without notice.