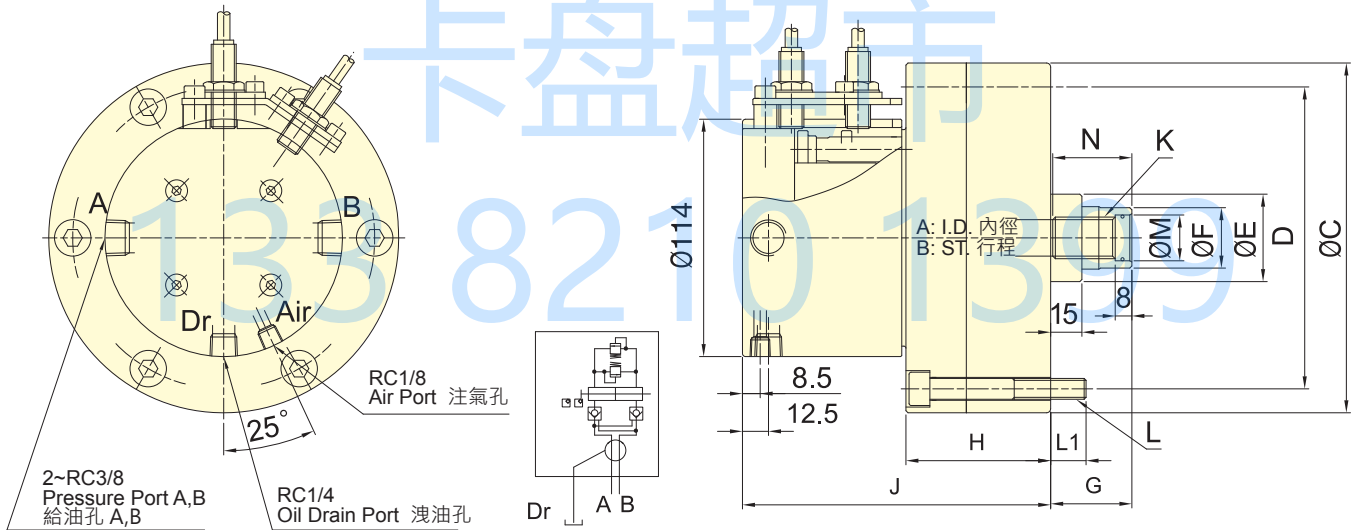




- 高速，輕量整合型注氣迴轉油壓缸，可經由後端迴轉繼手供給空氣。
- 內建逆止閥自鎖機構，洩壓閥及行程控制近接開關。
- 安裝時可由後端鎖固之。
- For short form, light weight and high speed rotary cylinder. To allow compressed air to be feed from the rear end of the distributor through the rotating union.
- Built-in safety check valves, pressure relief valves and proximity sensor.
- Can screw it from the rear end of the cylinder when mounting.
- 洩油孔配管務必單獨接回油壓槽，以避免產生背壓。
- 使用時，請混入微量的油霧。
- The drain port should be independently connected to oil tank to avoid back pressure.
- When used, a little oil mist should be contained.



保留規格修改的權利  
Subject to technical changes

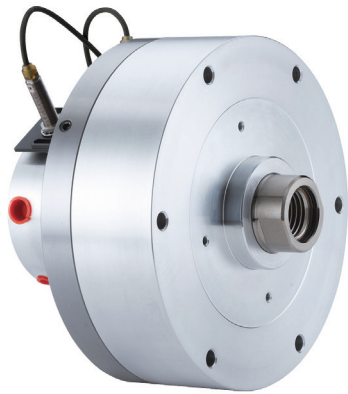
### 技術規格 SPECIFICATIONS

型號 Model	活塞面積 Eff. piston area		行程 Piston stroke	最高迴轉數 Max. speed	最高使用壓力 Max. pressure	注氣部最高使用壓力 Air connection Max. pressure	I Moment of inertia	重量 Weight
	伸側 (Extend) cm <sup>2</sup>	拉側 (Retract) cm <sup>2</sup>						
RE-A110	91.2	87.9	20	6000	4.0(40)	0.8(8)	0.02	6.9
RE-A120	109.3	106	21	6000	4.0(40)	0.8(8)	0.02	8.8
RE-A130	128.9	123.1	30	6000	4.0(40)	0.8(8)	0.03	9.1

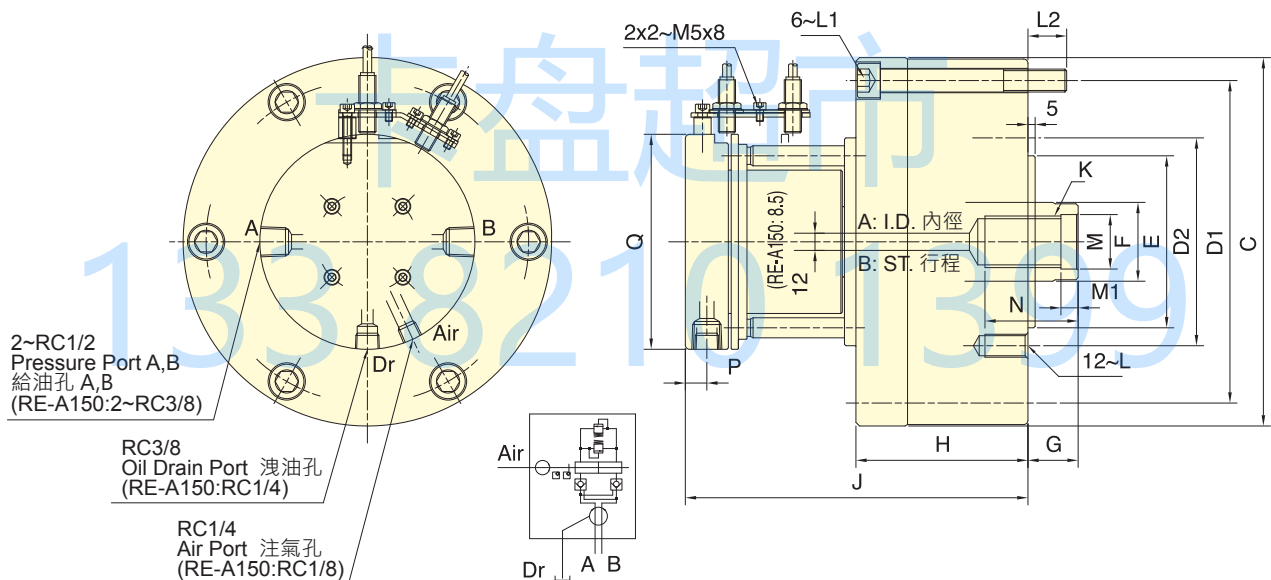
### 外型尺寸 DIMENSIONS

Model	A	B	C (h7)	D	E	F	G max.	G min.	H	J	K	L	L1	M (H8)	N	P
RE-A110	110	20	145	128	42	29	60	40	66	146	M20x2.5	6~M8x70	12	22	38	S20
RE-A120	120	21	168	145	42	29	60	39	69.5	148	M20x2.5	6~M10x75	17	22	38	S20
RE-A130	130	30	168	150	50	33	60	30	79.5	158	M24x3.0	6~M10x85	17	27	43	S24

近接開關型式: Model IFS287(IFM) DC 10-30V 100mA NPN • Proximity sensor: Model IFS287(IFM) DC 10-30V 100mA NPN.



- 高速，輕量整合型注氣迴轉油壓缸，可經由後端迴轉繼手供給空氣。
- 內建逆止閥自鎖機構，洩壓閥及行程控制近接開關。
- 安裝時可由後端鎖固之。
- For short form, light weight and high speed rotary cylinder. To allow compressed air to be feed from the rear end of the distributor through the rotating union.
- Built-in safety check valves, pressure relief valves and proximity sensor.
- Can screw it from the rear end of the cylinder when mounting.
- 洩油孔配管務必單獨接回油壓槽，以避免產生背壓。
- 使用時，請混入微量的油霧。
- The drain port should be independently connected to oil tank to avoid back pressure.
- When used, a little oil mist should be contained.



保留規格修改的權利  
Subject to technical changes

### 技術規格 SPECIFICATIONS

型號 Model	活塞面積 Eff. piston area		行程 Piston stroke	最高迴轉數 Max. speed	最高使用壓力 Max. pressure	注氣部最高使用壓力 Air connection Max. pressure	I Moment of inertia	重量 Weight
	押側 (Extend) cm <sup>2</sup>	拉側 (Retract) cm <sup>2</sup>						
RE-A150	174.4	160.8	30	5500	4.0(40)	0.8(8)	0.06	14.9
RE-A200K	292.4	274.9	35	4000	4.0(40)	0.8(8)	0.19	29.1
RE-A200L	292.4	265.4	50	4000	5.0(50)	0.8(8)	0.21	30.4
RE-A250	465.2	438.2	60	2000	5.0(50)	0.8(8)	0.43	47.2

### 外型尺寸 DIMENSIONS

Model	A	B	C	D1	D2	E (h7)	F	G max.	G min.	H	J	K	L	L1	L2	M (H8)	M1	N	P	Q
RE-A150	150	30	205	180	130	110	45	60	30	99	177.5	M30x3.5	M12x24	M12x105	18.5	32	10	50	12.5	114
RE-A200K	195	35	257	225	145	120	55	73	38	120	239	M36x4.0	M16x30	M16x130	27	38	12	65	15	150
RE-A200L	195	50	257	225	170	125	65	80	30	135	254	M42x3.0	M16x30	M16x145	27	45	12	65	15	150
RE-A250	245	60	307	275	220	160	65	85	25	165	280	M42x3.0	M20x35	M16x175	28	45	12	65	15	150

近接開關型式 : Model IFS287(IFM) DC 10-30V 100mA NPN • Proximity sensor : Model IFS287(IFM) DC 10-30V 100mA NPN .