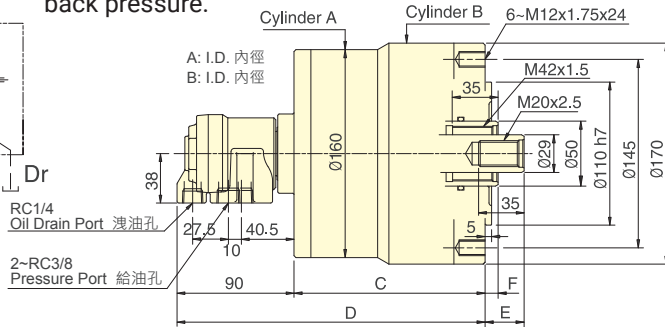
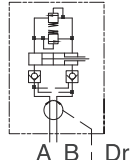
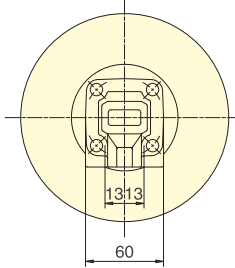


- 短型，輕量，雙桿型迴轉油壓缸。
- 內建逆止閥自鎖機構及壓力洩壓閥。
- For short form, light weight, double rod rotary cylinder.
- Built-in safety check valves and pressure relief valves.
- 洩油孔配管務必單獨接回油壓槽，以避免產生背壓。
- The drain port should be independently connected to oil tank to avoid back pressure.



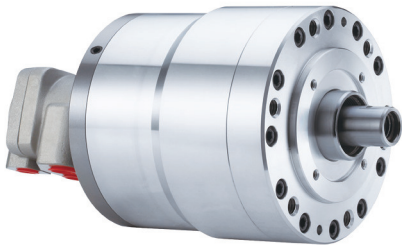
保留規格修改的權利  
Subject to technical changes

### 技術規格 SPECIFICATIONS

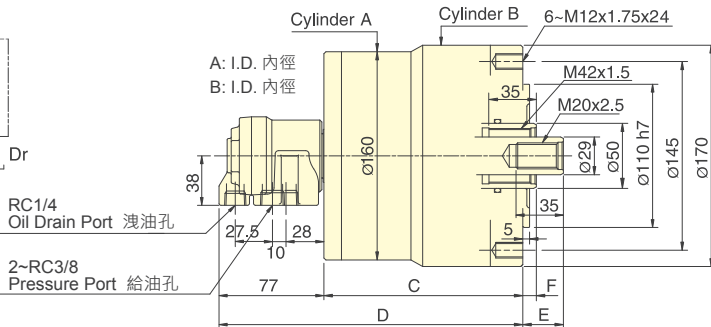
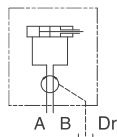
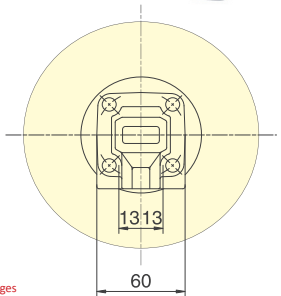
型號	活塞面積 Eff. piston area				行程	最高迴轉數	最高使用壓力	I	重量
	伸側 (Extend)		縮側 (Retract)						
Model	A	B	A	B	Piston stroke	Max. speed	Max. pressure	Moment of inertia	Weight
	cm <sup>2</sup>	cm <sup>2</sup>	cm <sup>2</sup>	cm <sup>2</sup>	mm	min <sup>-1</sup> (r.p.m.)	MPa(kgf/cm <sup>2</sup> )	kg·m <sup>2</sup>	kg
RD-120	122.7	126.1	116.1	113.1	20	5000	3.0(30)	0.14	11.3
RD-125	122.7	126.1	116.1	113.1	25	5000	3.0(30)	0.15	11.5

### 外型尺寸 DIMENSIONS

Model	A	B	C	D	E max.	E min.	F max.	F min.
RD-120	125	130	137	227	60	40	35	15
RD-125	125	130	147	237	55	30	35	10



- 短型，輕量，雙桿型迴轉油壓缸。
- For short form, light weight, double rod rotary cylinder.
- 洩油孔配管務必單獨接回油壓槽，以避免產生背壓。
- The drain port should be independently connected to oil tank to avoid back pressure.



保留規格修改的權利  
Subject to technical changes

### 技術規格 SPECIFICATIONS

型號	活塞面積 Eff. piston area				行程	最高迴轉數	最高使用壓力	I	重量
	伸側 (Extend)		縮側 (Retract)						
Model	A	B	A	B	Piston stroke	Max. speed	Max. pressure	Moment of inertia	Weight
	cm <sup>2</sup>	cm <sup>2</sup>	cm <sup>2</sup>	cm <sup>2</sup>	mm	min <sup>-1</sup> (r.p.m.)	MPa(kgf/cm <sup>2</sup> )	kg·m <sup>2</sup>	kg
RD-120N	122.7	126.1	116.1	113.1	20	5000	3.0(30)	0.14	11.2
RD-125N	122.7	126.1	116.1	113.1	25	5000	3.0(30)	0.15	11.4

### 外型尺寸 DIMENSIONS

Model	A	B	C	D	E max.	E min.	F max.	F min.
RD-120N	125	130	137	214	60	40	35	15
RD-125N	125	130	147	224	55	30	35	10